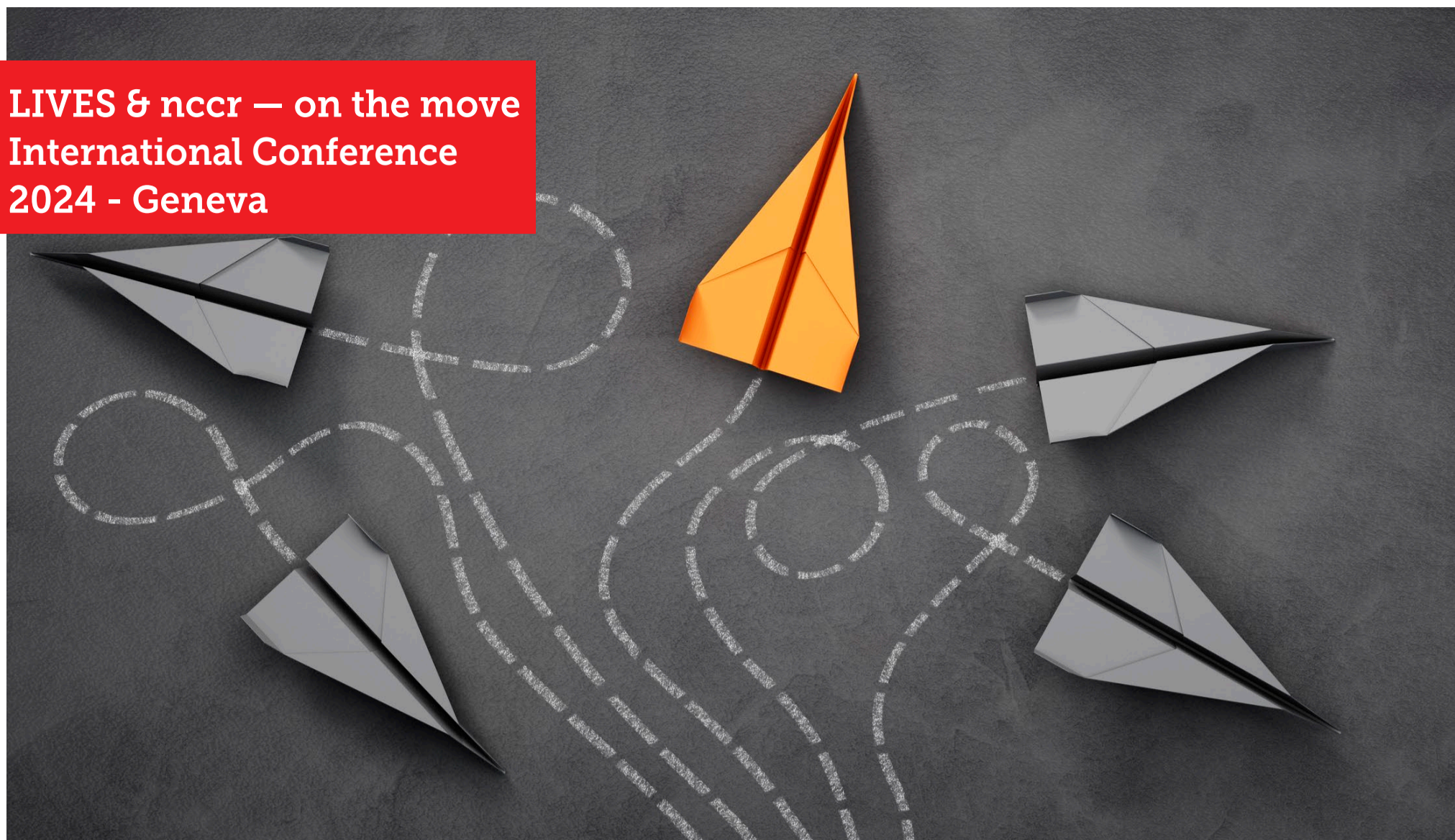


**LIVES & nccr — on the move  
International Conference  
2024 - Geneva**



## **Call for submissions** ***Mobility in the life course***

The early 21st century is marked by novel forms of mobility encompassing migration, family, career and social mobility. Yet, **individual mobility encounters considerable resistance**: international migrations face regulations that control movement across national borders; new forms of **family mobility** clash with traditional norms; **novel career paths** conflict with costly migration or family changes; while **social mobility**, especially intergenerational mobility, remains often trapped by institutions such as educational systems.

To shed light on **evolving forms of mobility**, this conference brings together two perspectives developed within the National Centers of Competence in Research (NCCR): the **life-course perspective** (Centre LIVES, Lausanne and Geneva) and the **Migration-Mobility Nexus** (nccr — on the move, Neuchâtel).

The conference will be interdisciplinary. We, therefore, look forward to receiving papers from various disciplines such as sociology, demography, psychology, economics, political science, anthropology, geography, history, or statistics.

### **Confirmed keynote speakers:**

- **Borja Martinović** - Utrecht University
- **Hill Kulu** - University of St Andrews
- **Dominik Hangartner** - ETH Zurich

Submissions through the [conference website](#)  
(more information on the next page).



### **Venue**

**5 & 6 November 2024**  
**University of Geneva**  
**No conference fees** - the LIVES Centre and the nccr — on the move invite participants to coffee breaks, lunches, drinks and the conference dinner (*apéritif dinatoire*) on 5 November 2024.

### **Deadline for submission**

**31 May 2024**  
Authors will be informed about the decision by 21 June 2024.

**For further questions, please contact the local organizers.**

Clémentine Rossier -  
[Clementine.Rossier@unige.ch](mailto:Clementine.Rossier@unige.ch)  
Philippe Wanner -  
[Philippe.Wanner@unige.ch](mailto:Philippe.Wanner@unige.ch)



## Call for submissions

We welcome papers and posters that address **issues linked to migration and other forms of mobility in the course of life** (e.g. social, family, professional, educational).

We are particularly interested in submissions that use **innovative methods and novel data**. Theoretically grounded empirical inquiries are especially relevant to the conference and could address questions such as:

- How can a **longitudinal perspective** contribute to our knowledge of spatial, social and family mobilities?
- How can we **understand migration and integration trajectories** from a longitudinal and life course perspective?

- What are the **interactions** between migratory, family and/or socio-professional pathways? How does spatial (im)mobility affect professional careers and/or family changes?
- What is the **social psychology** of migration, what are the **affective / mental health consequences** of mobility?
- How can **different disciplines contribute** to life course analysis in the field of migration and mobility?



**Please submit your proposal through the conference website:** <https://centre-lives.ch/fr/appel/lives-international-conference-2024>

The submission must include a **short abstract** of 100 words as well as an **extended abstract** of 500 words.

The abstract must be sufficiently detailed to allow the organizers to judge the merits of the paper. It should include a **clear research question** and information about the **data and method**.

Please also provide **3 to 6 keywords** and choose the preferred format (oral/poster) during the submission process, but do not submit more than one paper per first author/presenter.

Abstracts that are not accepted for oral presentation might be included in the poster session; in that case, authors will be asked about their willingness to give a poster presentation.

The deadline for submission is **31 May 2024**.

Authors will be informed about the **decision by 21 June 2024**.

---

## Keynote speakers



**Borja Martinović** is an Associate Professor at the Department of Interdisciplinary Social Science at Utrecht University, Netherlands.

Her research lies at the intersection of social psychology and sociology, and it revolves around group identities and intergroup relations in multi-ethnic societies.



**Hill Kulu** is Professor of Human Geography and Demography at the University of St Andrews (UK).

He also is President of the European Association for Population Studies, Co-Director of the ESRC Centre for Population Change & Connecting Generations and a Co-Editor of Population Studies.



**Dominik Hangartner** is a Professor of Public Policy and Faculty Co-Director of the Immigration Policy Lab.

He received his Ph.D. in social science from the University of Bern in 2011. Dominik uses field work and statistics to study the effects of migration policies and political institutions.